

New Jersey Resources

Department of Human Services
<https://www.state.nj.us/humanservices>

Department of Health <https://www.nj.gov/health>

Department of Education <https://www.nj.gov/education>

Language Development Resources

The National ASL and English Bilingual Consortium for
Early Childhood Education <http://www.bilingualece.org>

The Standardized Visual Communication and Sign
Language Checklist for Signing Children
<http://www.signlang-assessment.info>

Reaching Individual Potential through Personal
Language Experience <https://ripplelanguage.com>

Language First <https://languagefirstlab.com>



New Jersey Division of the
Deaf and Hard of Hearing

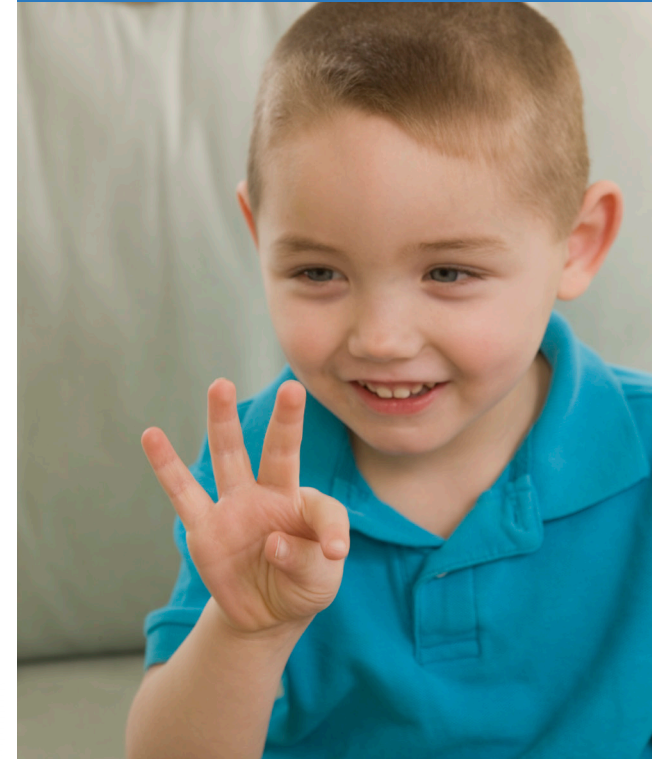


State of New Jersey
Phil Murphy, Governor
Sheila Oliver, Lt. Governor



Department of Human Services
Carole Johnson, Commissioner

ASL Deaf Language Associates Program for Children Ages 0-5





Did you know that your deaf and hard of hearing child can receive language acquisition services through an American Sign Language (ASL) Deaf Language Associate?

Research shows that the first five years of life are essential for language learning. It is important for deaf and hard of hearing children to receive early language input during this critical time period. Did you know that learning ASL will not hinder a child's ability to learn spoken language? Families can use ASL in conjunction with spoken language development to ensure early language acquisition and development.

An ASL Associate will support children who are deaf or hard of hearing, and their families in childcare settings, homes, pre-schools, or other applicable settings.

What is an ASL Deaf Language Associate?

- A Deaf adult with experience working with young children/babies/toddlers.
- Has strong communication skills and is able to interact and develop rapport with children, adults in the child care setting, and the parents of the child.
- Has advanced proficiency skills to provide a fluent language model for the child.
- Provides supplementary services to support the child's educational plan, and development.
- Has knowledge of and participates in Deaf community events.
- Able to follow curriculum guidelines, maintain records and submit regular reports.

How the Program Works

The NJ Division of the Deaf and Hard of Hearing (DDHH) will screen ASL Associate candidates and assign them to a Childcare Resource & Referral (CCR&R) center near you. Associates can also work in pre-school programs or in home visiting programs.

Associates will work with your child up to 25 hours a week in providing a language model. Associates will receive ongoing professional development to remain current in best practices.

Associates receive training from the Marie Katzenbach School for the Deaf (MKSD) with experienced educational staff, and trained in the SKI-HI curriculum – a nationally acclaimed curriculum.

HOW TO GET STARTED?

Contact DDHH for details on how to enroll your child in the ASL Deaf Language Associates program.



**NJ Division of the Deaf
and Hard of Hearing**
(609) 588-2648



DDHH.communications2@dhs.state.nj.us
<https://www.nj.gov/humanservices/ddhh/>

